

# A FEW FACTS ABOUT THE FIELD RESEARCH

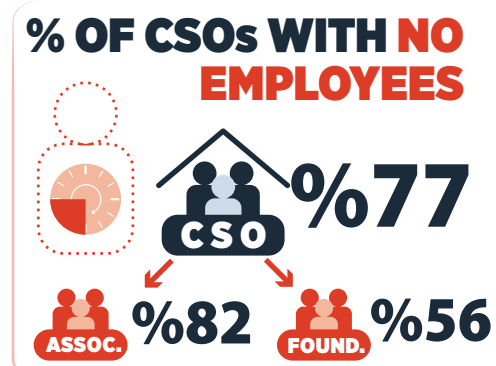


**MEETINGS WITH 48 RIGHTS-BASED CSOs**  
**2 FOCUS GROUP MEETINGS**

## WHICH FACTORS WERE TAKEN INTO ACCOUNT IN THE FIELD RESEARCH?

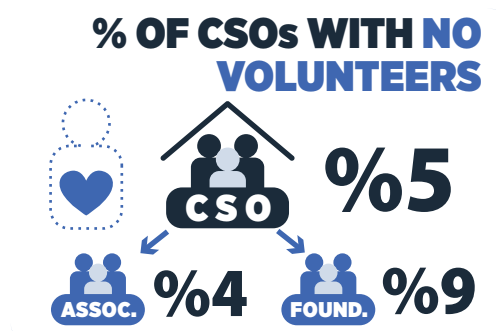
- Capacity of CSO
- Perception of participation in decision-making processes
- Rights-based approach
- Freedom of association
- Participation in decision-making processes
- Financial status

# EMPLOYEES AND VOLUNTEERS



Nearly **80%** of the organizations without full-time employees operate at the **town/neighborhood/district and Province levels.**

The area of operation expands as the number of employees increase.



- %2** The proportion of organisations that have been sanctioned by the Social Security Institution (SGK) for employing uninsured staff
- %5** The proportion of organisations that have a problem because volunteers are not insured against accidents
- %13** The proportion of organisations reporting that they had problems managing their relationships with volunteers who had applied
- %87** The proportion of organizations reporting that the lack of legal regulations on volunteering has **not** proven to be a problem
- %76** The proportion of organizations noting that the state is reluctant to promote volunteering

**Only one in five organizations has a policy document such as a volunteering agreement or code of conduct.**

**One in four organizations is having difficulty finding volunteers.**

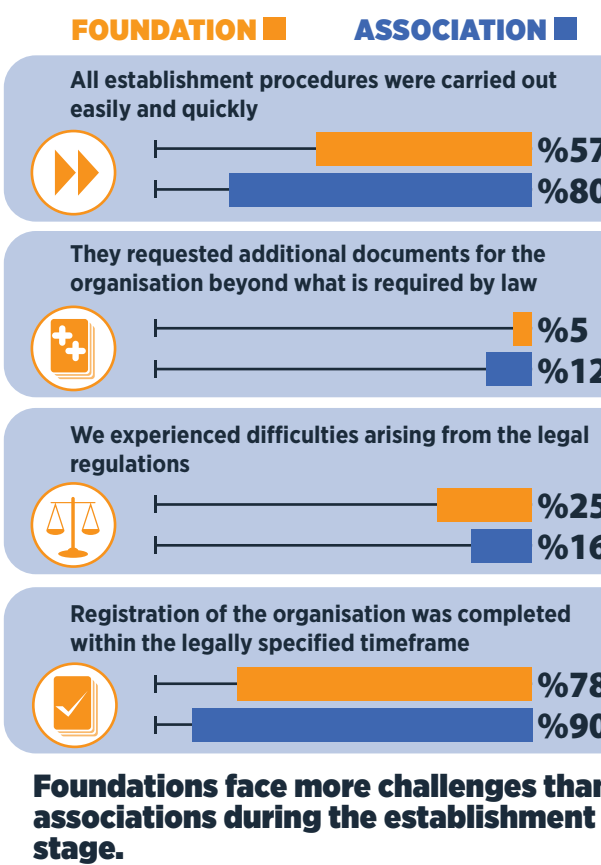
**About one in three organizations had difficulty in volunteering because of the pandemic.**



**AVERAGE NUMBER OF VOLUNTEERS: 67**

Almost all CSOs have volunteers.

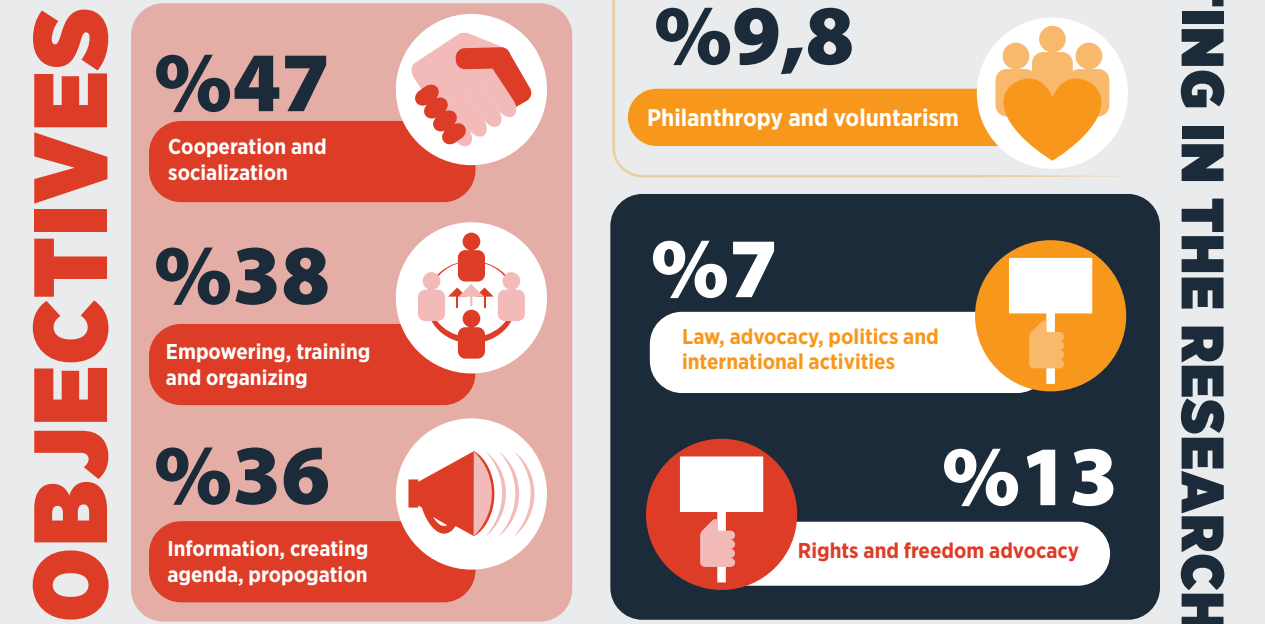
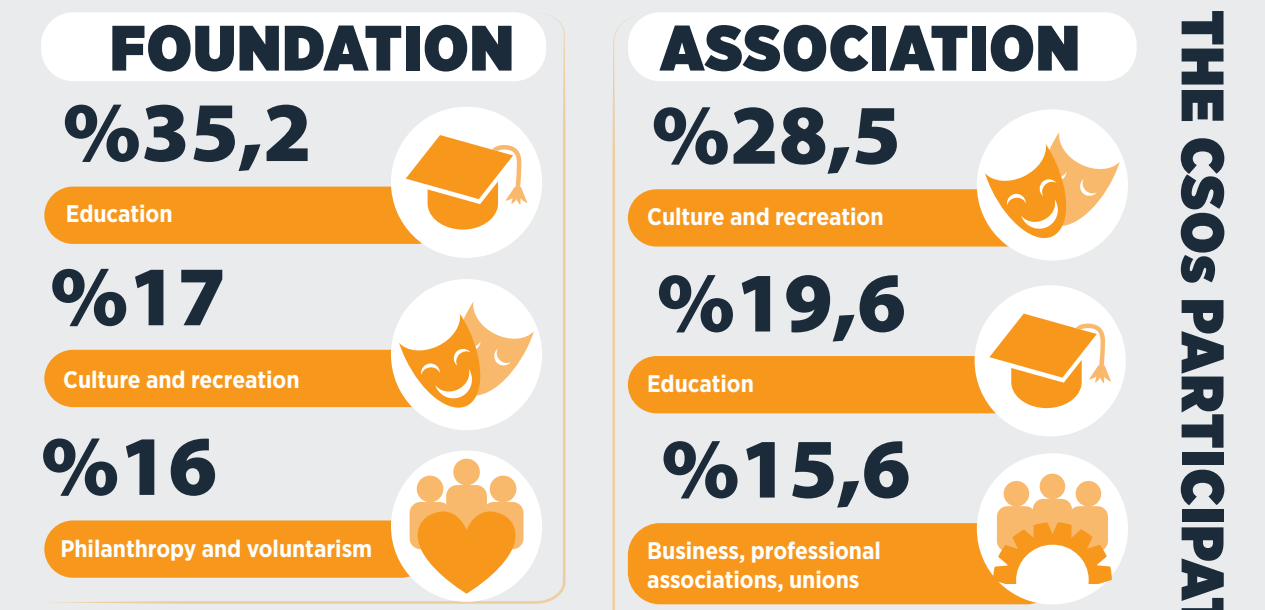
## WHAT ARE THE CHALLENGES IN ESTABLISHING A CSO?



**One in five CSOs faced challenges due to the legal regulations.**

- %12** CSOs whose registration was not completed within the legal period.
- %21** Those who think that political criteria were applied during registration
- %11,5** Were asked to submit additional documents although the law stipulates no such requirement
- %11** Those who faced challenges due to the attitude of the administration/court
- %20,5** Those whose establishment procedures were not easy and quick

## FIELDS OF ACTIVITY



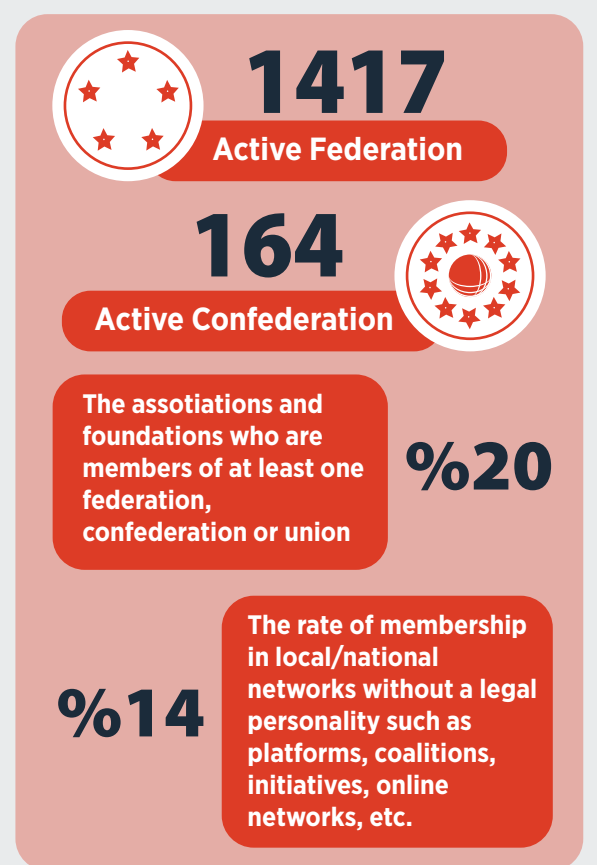
**>%60** The most important target audience is **young people and children.**

**The target group significantly influences the field of activity and methods of CSOs.**

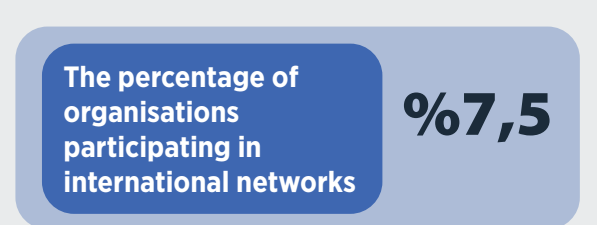
New foundations focus on **education and philanthropy.**

Around **%30** of foundations have religious signifiers in their titles or activities. However **only %5** define themselves as a **religious foundation.**

## RELATIONSHIPS BETWEEN CSOs



## COOPERATION WITH INTERNATIONAL CSOs



## WHICH PROBLEMS ARE FACED FOR MEMBERSHIP IN CSOs?

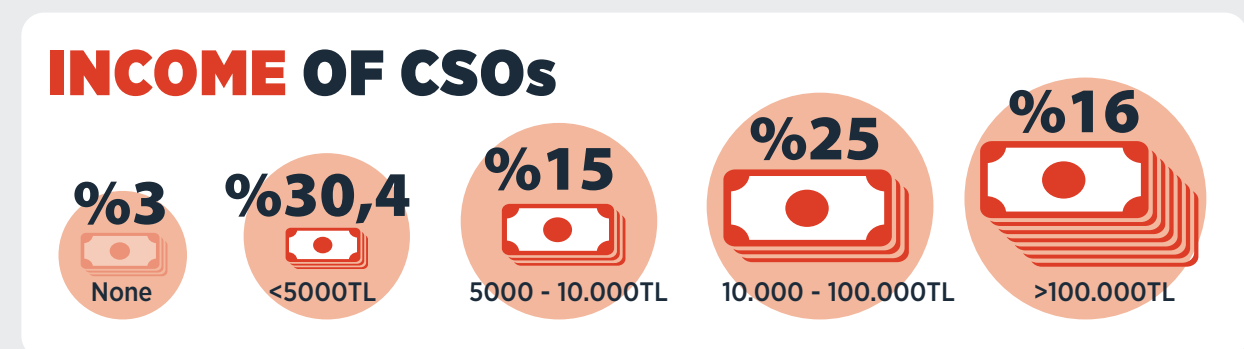
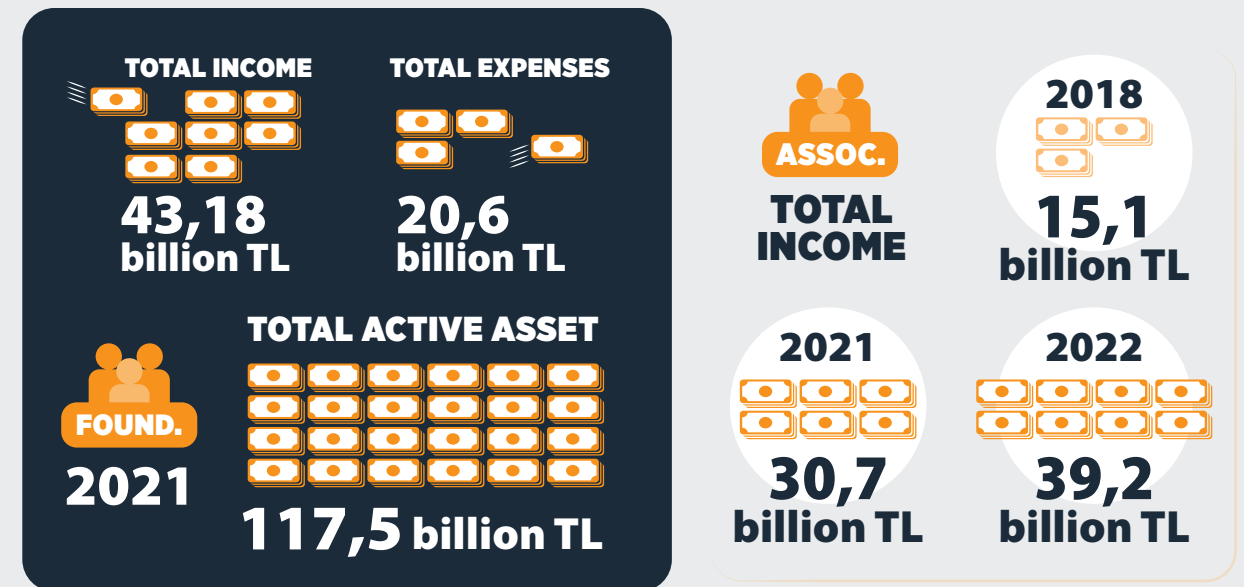
- COMPULSORY MEMBER DECLARATION**
- The number of association memberships fell by **AROUND 4 MILLION** following the introduction of compulsory member declaration.
- %12** of the associations stated that they faced challenges due to the obligation to declare members.
- %1,3** Fined for failure to meet notification requirements
- %2,8** Loss of members due to the data of current members being inaccessible and not notified
- %2,9** Compulsory dismissal from membership
- %3,9** Resigning of members
- %6,7** Difficulty in finding new members

## HOW MUCH DO THE CSOs BENEFIT FROM GRANTS?

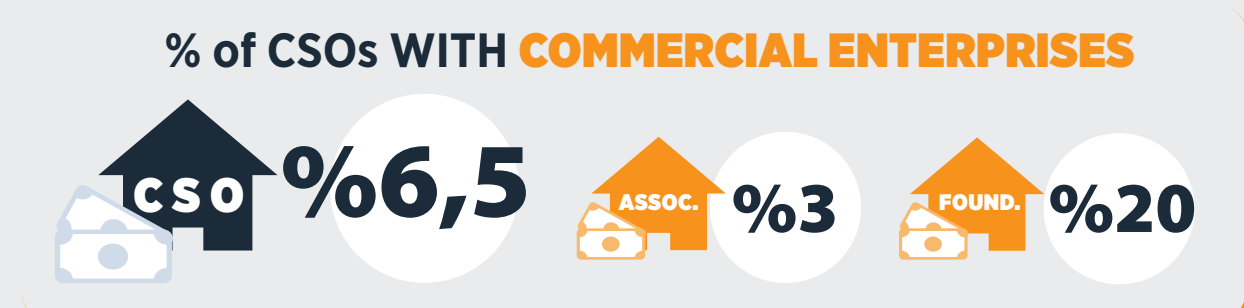
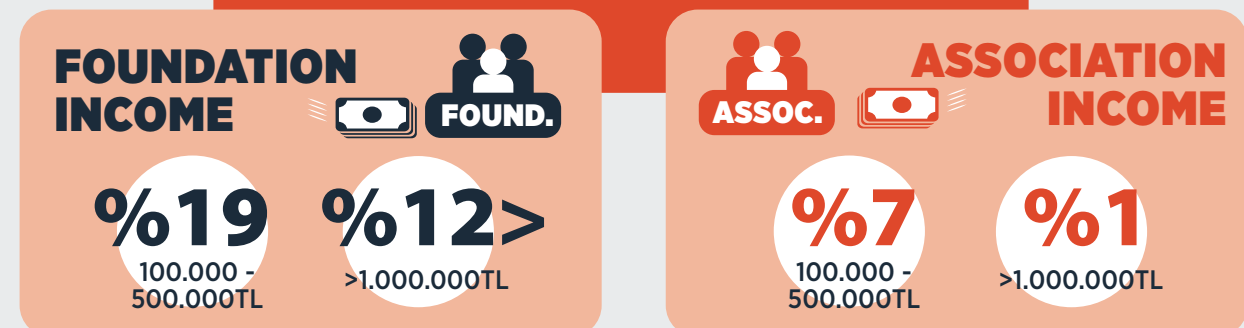
- %6** The rate of the CSOs that received in-kind or financial support from national or local authorities
- %28** **AGREE** ✓ **DISAGREE** ✗ **%43** Public resources meet the needs of civil society.
- Only one in three CSOs** believe that CSOs play an important role in deciding how public resources are used.
- %25** **AGREE** ✓ **DISAGREE** ✗ **%33** The distribution of public resources are fair
- %6** CSOs that received grants from foreign foundations, states or the European Union
- %15** of organisations receiving grants indicated that they were targeted because of the grant they received.



# WHAT IS THE FINANCIAL SITUATION OF CSOs?



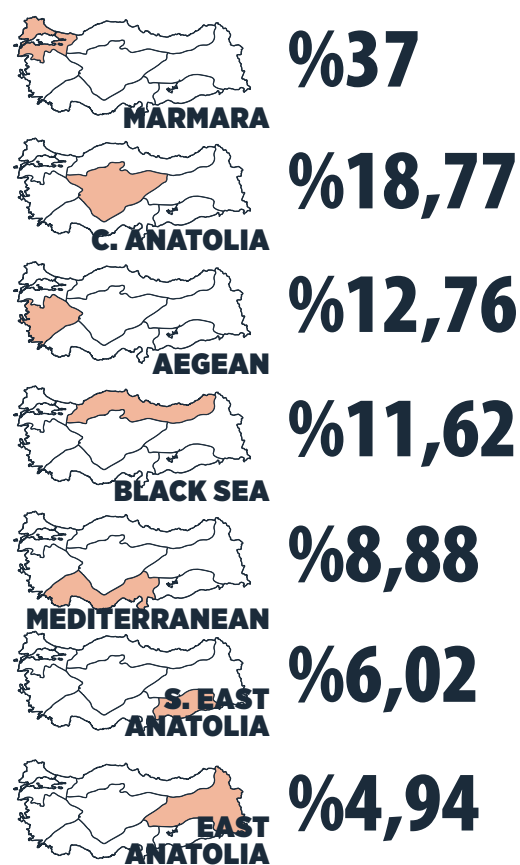
Financially, foundations fare better than associations.



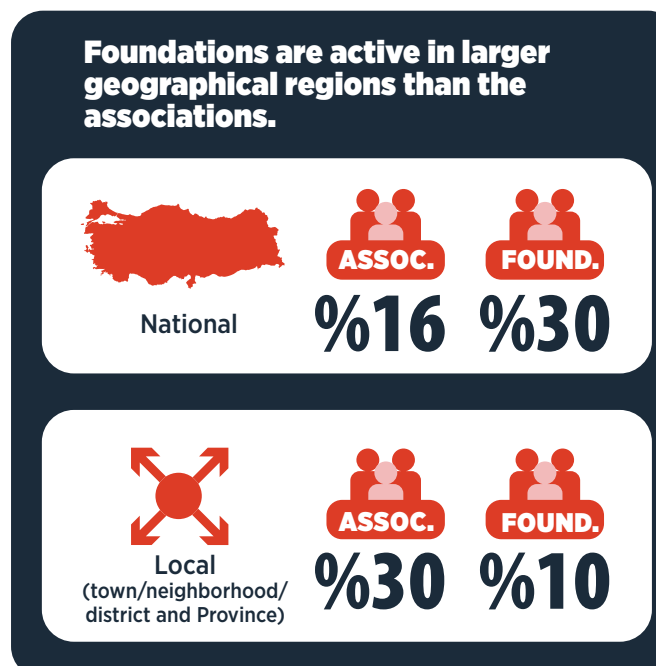
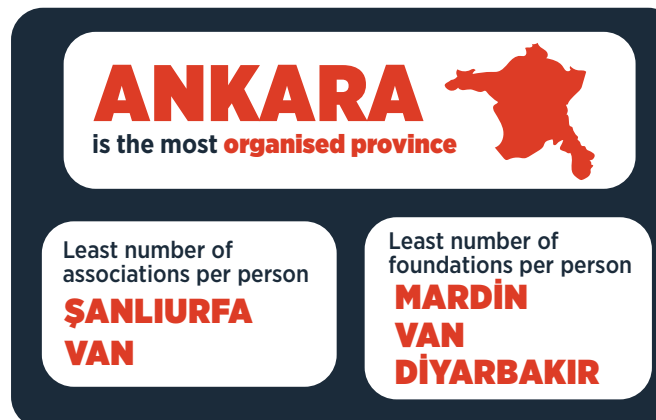
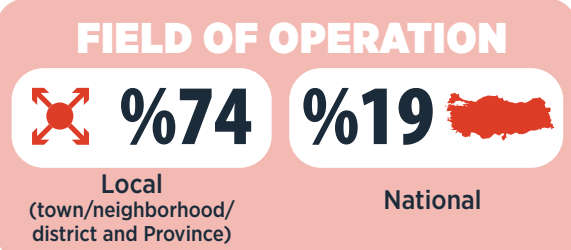
# WHERE DO THE CSOs OPERATE IN TÜRKİYE?



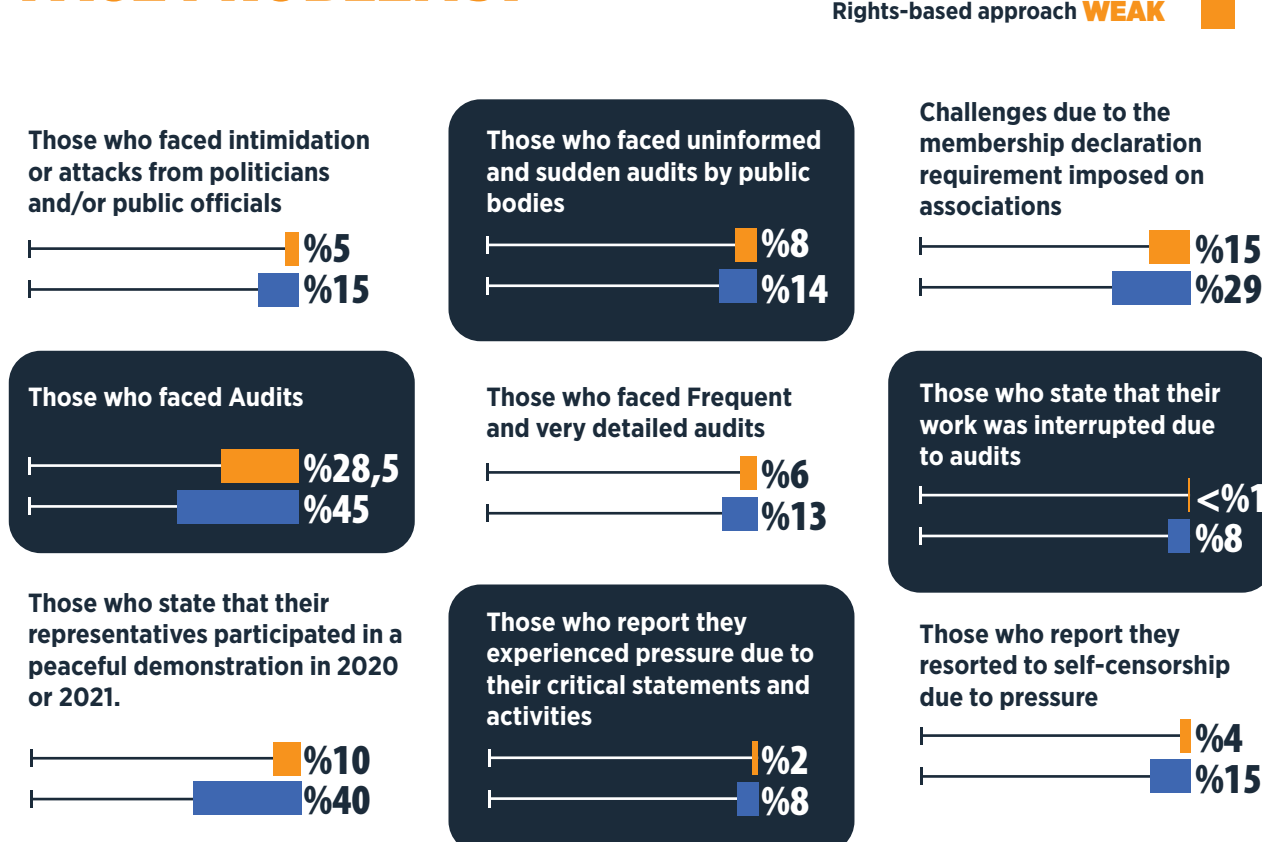
## ASSOCIATIONS BY REGION



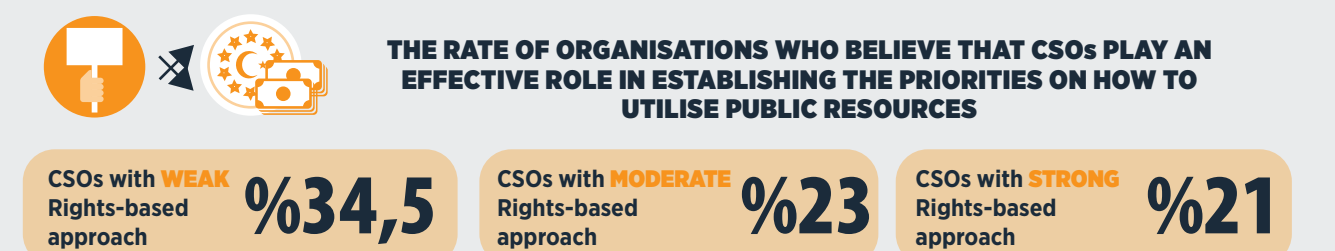
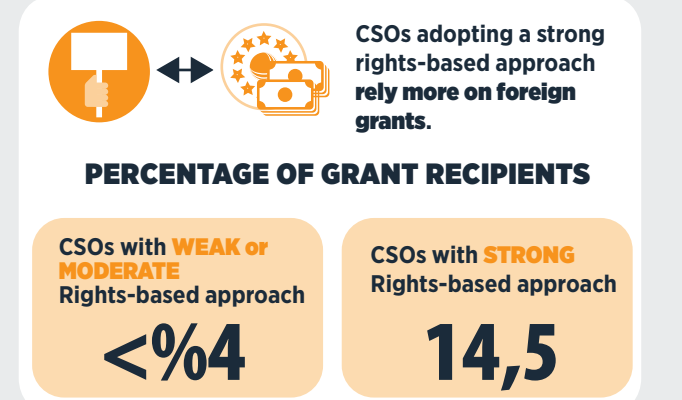
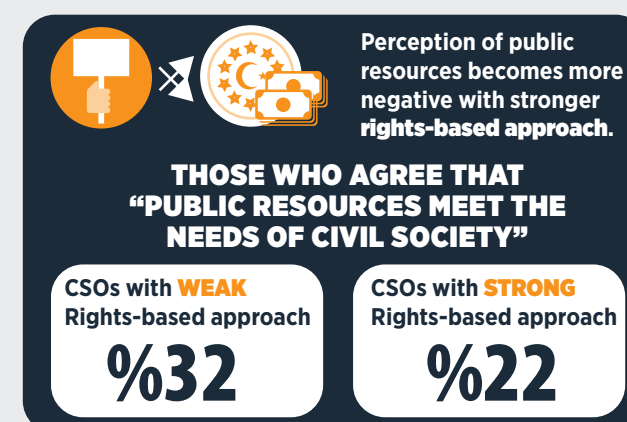
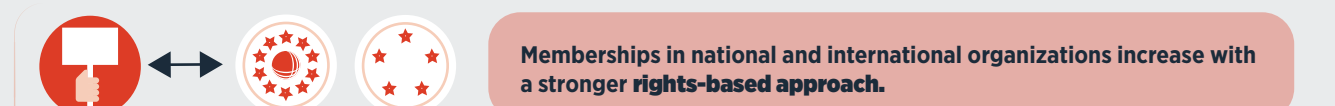
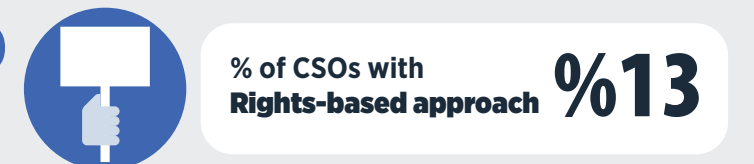
Percentage of associations by region of operation



# IN WHICH AREAS DO THE ORGANISATIONS ADOPTING A RIGHTS-BASED APPROACH FACE PROBLEMS?



# RIGHTS-BASED APPROACH



**CIVIL SOCIETY ORGANISATIONS IN TÜRKİYE:**  
 FREEDOM OF ASSOCIATION AND RIGHT TO PARTICIPATION

This publication is financed by the European Union. The contents are the sole responsibility of STGM and do not necessarily represent the view of the European Union.